

NEO P550

New. Efficient. Optimal.



 **optrel**[®]
swiss made 

SEE
WHAT YOU
CAN DO

new design.
efficient performance.
optimal price.

The optrel **neo** p550 combines the advantages of the proven p550 helmet shell with the newest ADF technology from optrel. Experience true color vision in a mid-price helmet. With a new efficient energy concept that keeps it action-ready for 3,000 hours. And a reaction time of only 0.1 ms after striking a welding arc. Perfect protection and comfort for your eyes!



Color spectrum of a Standard ADF



color spectrum of the optrel Neo p550 with true color view



The welder's normal world: environment in green shades with low contrast levels.

The optrel revolution: finally experience true color view during the whole welding process.

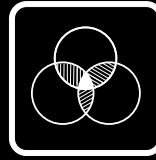
A classic with newest ADF technology.

The optrel p550 is one of the best-selling welding helmets from optrel. With its new ADF technology it now gets even better.



Shade level 4 / 9-13

With a seamless shade level adjustment from DIN 9 to 13, the optrel **neo** p550 is the perfect solution for all popular welding applications.



True color view

The specially developed UV/IR filter allows a realistic perception of colors, at long last bringing color into the world of the welder.



Delay function

After shutdown of the welding arc, the ADF momentarily stays closed to protect eyes from the strong afterglow of the welding seam.



Lightweight

Weighing only 495g, the optrel **neo** p550 is one of the lightest automatic welding helmets available. Its ergonomic design minimizes strain on the head and neck, ensuring comfort throughout the work day.



New Energy concept

With its radically more energy efficient electronic system including a „Super-Sleep-Mode“ the **neo** p550 stays ready to use for approximately 3,000 hours without changing batteries.



Helmet system

Item no.

Helmet system

Item no.



neo p550 welding helmet
black

1007.000



neo p550 welding helmet
black with hard hat

1007.001



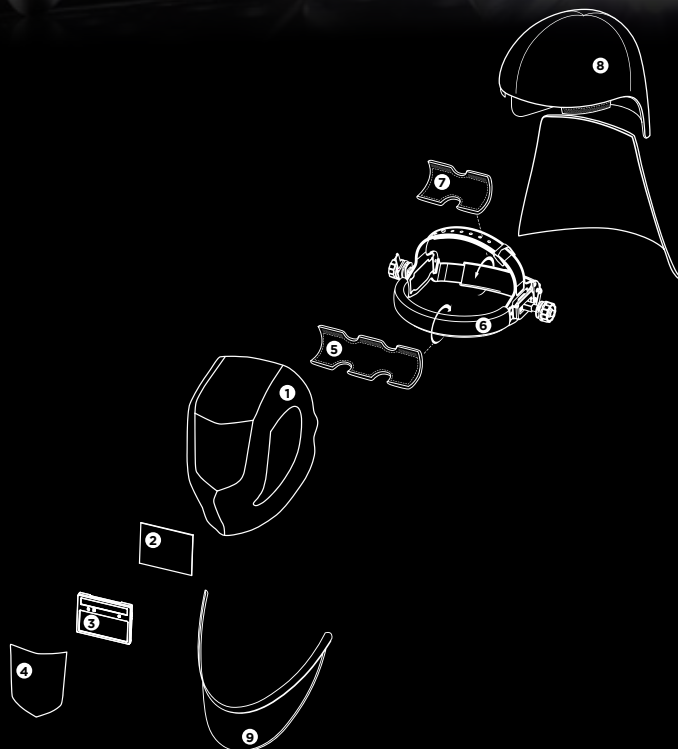
neo p550 welding helmet
green

1007.011



neo p550 welding helmet
carbon

1007.073



Spare parts and accessories

Item no.

1a	Helmet shell neo p550 black	5001.650
1b	Helmet shell neo p550 green	5001.661
1c	Helmet shell neo p550 carbon	5001.651
2	Inside cover lens (5 pcs.)	5000.001
3	ADF cartridge neo p550	5012.700
4	Front cover lens (5 pcs.)	5000.250
5	Adjustable headband (including sweatband and comfortband)	5003.250
6	Cotton sweatband (2 pcs.)	5004.073
7	Comfortband (2 pcs.)	5004.020
8	Head & neck protector, leather	4028.016
9	Chest protector, leather	4028.015



Technical Data

Description	ADF cartridge with true color view Shade levels from 9 to 13 continuously adjustable with knob; continuously adjustable sensitivity (with 'super high' range) and delay function		Field of view	50 x 100 mm 90 x 110 x 9.5 mm
Shade levels	inactive:	Shade level 4	Shape stability	Welding mask: up to 220°C / 428°F Front cover lens: up to 137°C / 266°F
	active:	Shade level 9-13	Eye protection	Ultraviolet / Infrared Protection: maximum protection at any shade level
Power supply	Solar cells, 2 pcs batteries 3V exchangeable (CR2032)		Operating temperature	-10°C to + 70°C / 14°F to 158°F
Operating time batteries	Approx. 3,000 hours (operating)		Storage temperature	-20°C to + 70°C / -4°F to 176°F
Sensors	3 sensors		Weight	495 g / 17.4 oz
Sensitivity	Continuously adjustable, new with "Super High" sensitivity		Application ranges	Any electric arc welding process Electrode Welding (Stick Welding, SMAW) / MIG / MAG (GMAW) / GMAW High melting rate process / Flux Cored Wire Welding / TIG welding (GTAW) / Plasma Arc Welding / Plasmacutting & Oxy-gas Welding <i>Prohibited for laser welding!</i>
Switching time	light to dark:	0.100 ms at room temperature 0.100 ms at 55°C	Scope of delivery	Welding helmet, instruction manual, batteries
	dark to light:	0.05 s - 1.0 s	Standards	CE, ANSI, EAC, AS/NZS, complies with CSA Z94.3
Classification EN379	Optical class:	1	Warranty	2 years (except batteries)
	Scattered light:	1		
	Homogeneity:	1		
	Angular dependence:	2		

Professional welding
with true color view.

Your optrel Reseller:



optrel AG
industriestrasse 2
CH-9630 wattwil
switzerland
www.optrel.com
info@optrel.com

optrel.com



9412.131.00